

A background image of a classroom with a student in the foreground raising their hand. The image is overlaid with a dark blue tint.

# Education...

Presented by

johnnewright  
SIGNAGE | EXHIBITION | PRINT

# WHO *we* ARE

Our founder  
**John E. Wright**

*"...nothing can replace hard work  
and an attention to detail."*



**Established in 1900 by John Wright, head office retains to this day the name Blue Print House, reflecting the early history of this successful family business. From modest beginnings, the Company started to expand during the 1990's, and is now the leading supplier of wide format digital print solutions to graphic design communities and marketing professionals across the Midlands with growing national distribution capability.**

Now managed by the fourth generation, the company's philosophy combines investment in the latest state of the art digital imaging and finishing equipment with a highly trained and skilled workforce who are motivated to provide the highest levels of customer service and image quality.

Ever since the early 1980s when he worked as part of Oxford University's Atmospheric Chemistry Team researching into the causes of the ozone hole, Tony has had a healthy interest in environmental issues. He is proud that the company has never used solvent printers and now uses low temperature UV cure printers which are acknowledged to have the lowest carbon footprint of any technology currently available to the print industry.

The key environmental issues of our day are carbon and plastic. On carbon, our investment in electric vehicles, our very low power printing technology and our carbon offset commitment working with the Woodland Trust allow us to say that we have one of the lowest carbon footprints per square metre of print of anyone in the European Print Industry. In regards to plastic, we are working to provide

PVC and metal free products to our customers and have just built our first totally plastic free exhibition stand.

For more ideas on eco-display products visit;  
[www.johnnewright.com/exhibition/eco-displays](http://www.johnnewright.com/exhibition/eco-displays)



---

*"We're good at what we do because we love doing it!"*

---

Tony Barnett, Chairman and MD  
of John E Wright.

**CREATIVE  
PROJECTS  
NEED CREATIVE  
SOLUTIONS**





**Our strength is our people. We have decades of combined experience; from our account and project managers, to our designers through to our production and installation teams, meaning we have all of the knowledge to be able to confidently offer our customers a true end-to-end experience.**



From an initial concept idea, whether that's a simple sketch on a scrap piece of paper or maybe just a 'silly idea' in your head, we can offer all of the support and pool our vast resources to be able to turn this into a reality and with everything

being under one roof, there isn't the need to be dealing with multiple companies in order to get your project moving, keeping costs lower and quality control kept to a maximum.

Park Güell are a signature of the  
legendary Catalan architect Antoni Gaudi.  
A World Heritage site, it is known for its  
unique architecture and stunning  
views of Barcelona.

PARK GÜELL

SPAIN

STAGE OF FRANCE

Education

MNEEB2003

REPUE  
LOUE FRANCO  
La Poste  
025

Leonardo da Vinci

MONA  
LISA

.10€

18.99€

PARK GÜELL

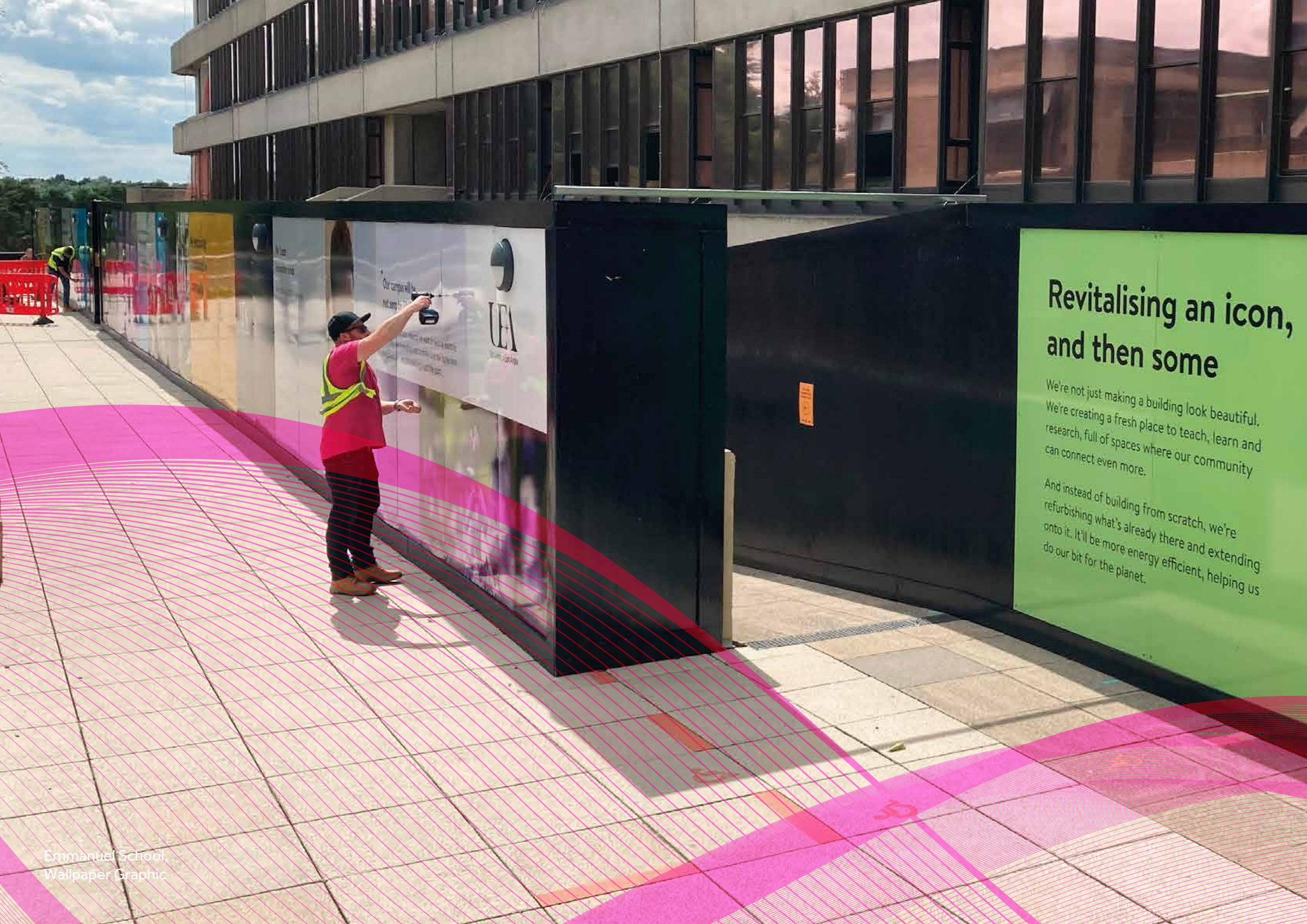


| ,ɛdjʊ'keɪʃn | *noun*

A process of learning and skill development, driven by teaching, training, and exploration.

Well designed educational spaces enhance engagement and improve outcomes. The right environment encourages participation, inspires creativity, and leaves a lasting impact on every learner.





## Revitalising an icon, and then some

We're not just making a building look beautiful.  
We're creating a fresh place to teach, learn and  
research, full of spaces where our community  
can connect even more.

And instead of building from scratch, we're  
refurbishing what's already there and extending  
onto it. It'll be more energy efficient, helping us  
do our bit for the planet.





**At John E Wright & Co Ltd, we are experts in producing and installing high quality interactive educational signage, visual themes, and wayfinding solutions. Our work spans a wide variety of education centres, including universities, colleges, schools, and academy trusts.**

Our aim is simple, to enhance the student and visitor experience through creative, engaging, and inspirational designs. We understand that educational spaces should connect with their audiences, so we focus on making them colourful, informative, and interactive. Perfect for sparking curiosity and excitement, particularly among younger learners.

We take pride in understanding the unique needs of each stage within the education sector, tailoring every design to the target audience. Whether it's wayfinding, murals, or banners, we ensure the materials, style, and messaging are always fit for purpose.

We can offer extensive coverage of any building or event.

For universities, our work includes everything from open day materials, welcome campaigns for new students, freshers fairs to graduation celebrations, sports pitch branding, bespoke exhibitions, UCAS events, and displays for final degree shows or dissertations.

In schools, colleges, and academy trusts, we provide internal and external signage, branding, and wayfinding systems, as well as materials for events such as summer fairs, open days, and special celebrations.

We also supply a wide range of high quality furniture tailored to the needs of educational environments, ensuring that each space is both functional and visually appealing.

Our experienced project managers guide you from concept and design through to full installation. We can work within existing themes and brand guidelines or help bring a completely fresh idea to life. From small updates to full building transformations, we ensure consistency and quality throughout.

At John E Wright & Co, we provide more than just comprehensive print solutions, we offer a thoughtful, supportive service that our education clients value highly.



UNIVERSITY OF  
DERBY



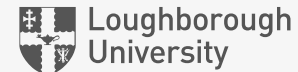
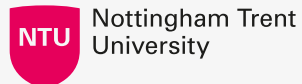
THE FUTURE IS **YOU**

Making education and industry work better together

[derby.ac.uk](http://derby.ac.uk)

PUSH TO DEPOSIT  
**LIBRARY**  
BOOK  
VAULT

## OUR PREVIOUS CLIENTS INCLUDE:











University of  
Nottingham Sport

DAVID ROSS SPORTS VILLAGE





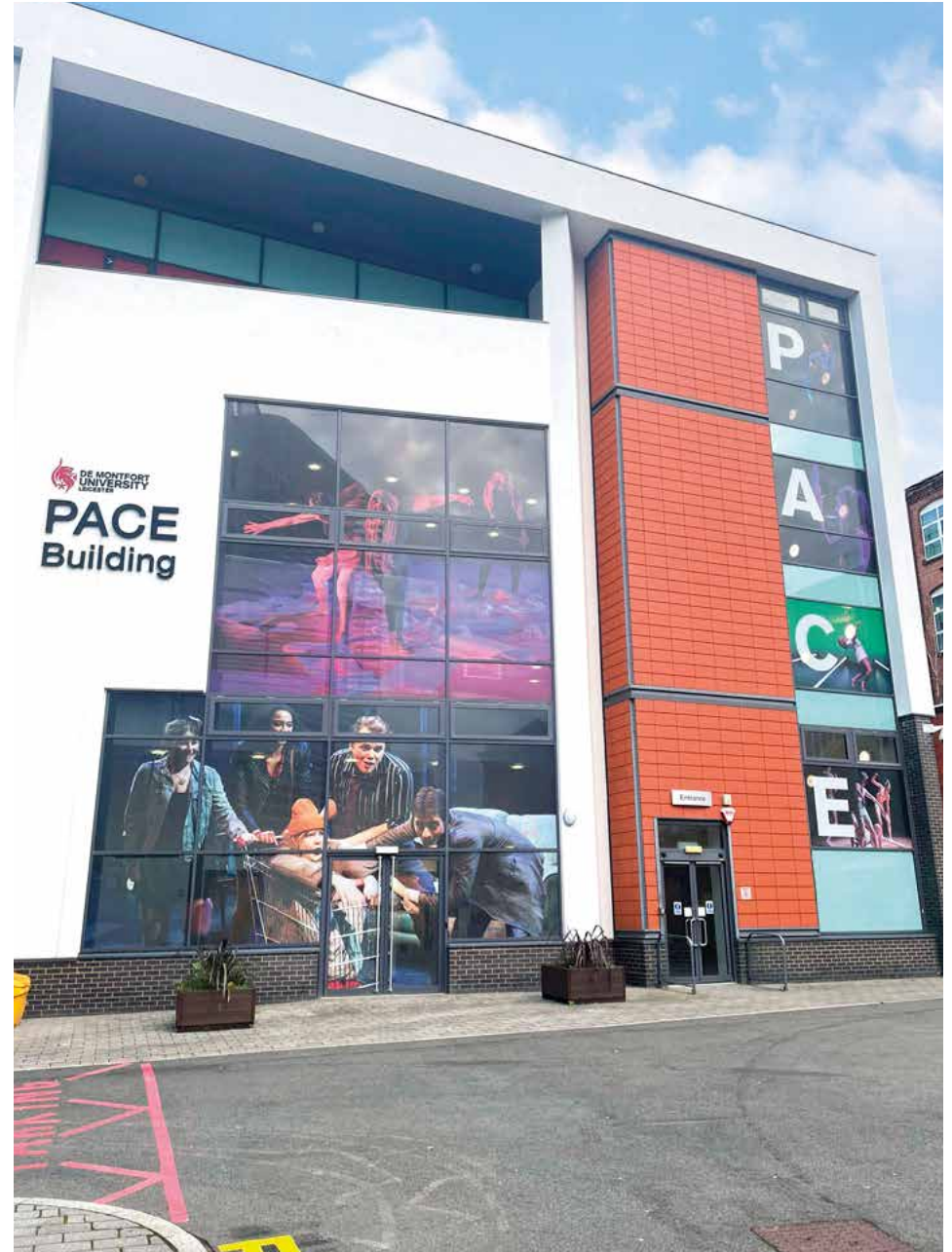














...as,  
...that you'll  
...the way















University of  
Nottingham Sport

[nottingham.ac.uk/sport](http://nottingham.ac.uk/sport)



University of  
Nottingham Sport

@UoNSport  
Facebook Twitter Instagram Snapchat



University of  
Nottingham Sport

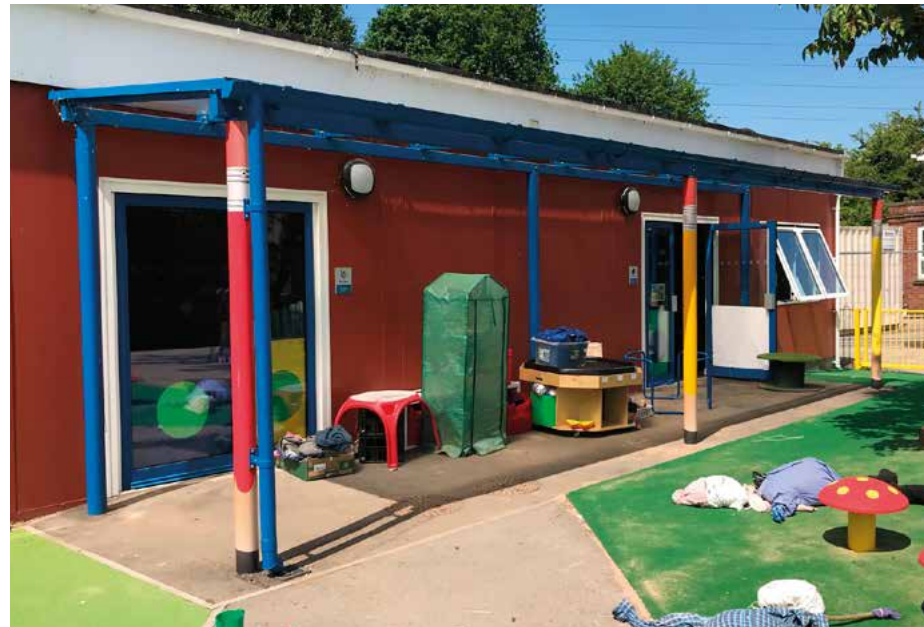


University of  
Nottingham Sport









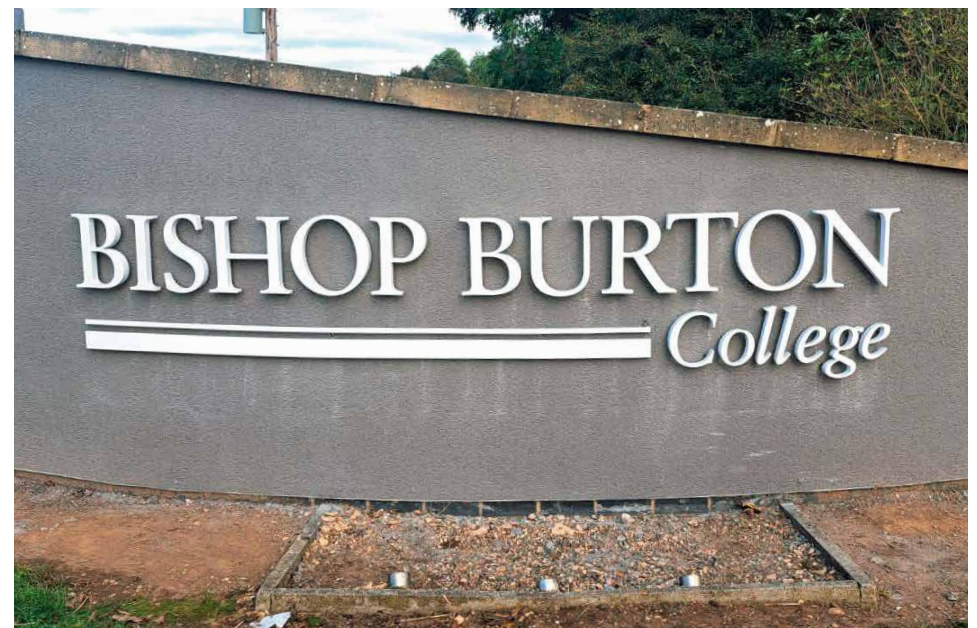


















# Interiors



**From concept to completion, we will work with you to provide a unique solution for a more productive, dynamic and efficient workplace. Our range of office furniture suits every budget, from traditional, contemporary to executive. We can take care of your CAD design and installation too.**

John E Wright has extensive knowledge and expertise in the office furniture sector. We're delighted that 80% of our products are manufactured in the UK using the latest technology to ensure the highest quality. We are committed to achieving continual improvement in environmental performance and the prevention of pollution in all areas of our business. When refurbishing a large office space, disposing of furniture can be difficult and expensive.

All your old furniture can avoid land fill with our recycling solutions to collect and recycle your old furniture, helping to reduce your carbon footprint whilst creating a modern environment.

Contact  
[supplies@johnnewright.com](mailto:supplies@johnnewright.com)  
01603 428 110









**LEADERS  
IN PRINT**

**SINCE 1900**



- **Nottingham**  
0115 950 6633
- **Nottingham Display HQ**  
0115 983 3200
- **Derby**  
01332 344 743
- **Oxford**  
01865 244 455
- **Hull**  
01482 308 621
- **Norwich**  
01603 428 110

Our network of branches  
are able to provide  
services to the whole of  
the UK and beyond.

**EDUCATION BRANDING**

— *done Wright!* —



[www.johnnewright.com](http://www.johnnewright.com)