



Pop Up



3x3 Pop Up Shown

## General Information:

Complete supplied stand includes; 3x3 or 3x4 Pop-up Frame, Magbars and Graphic Panels (5 or 6 drops depending on system).

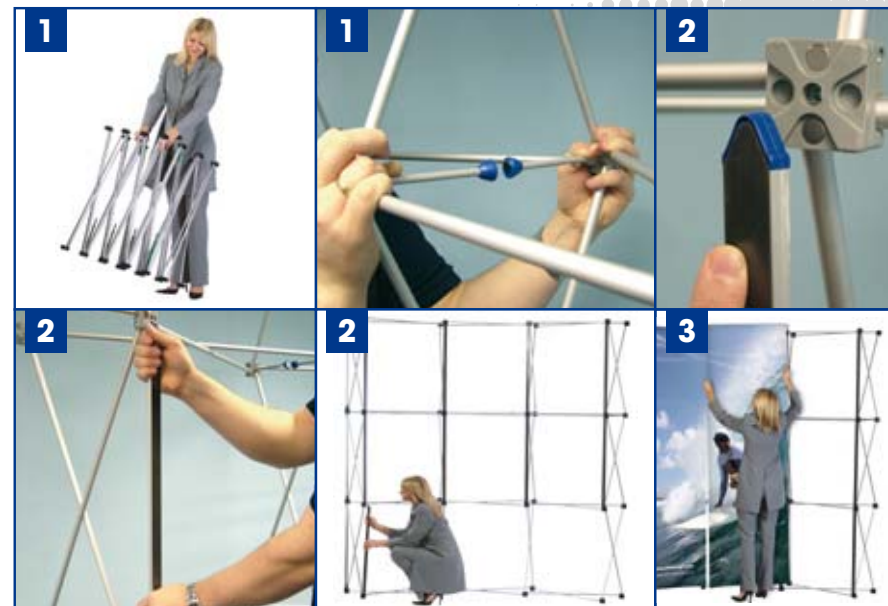
## Unit Weight:

Upto 25kg approx (dependant on system)

## Stand Specifications:

Assembled size;  
3x3 = 2235 (H) x 2540mm (W) x 685mm (D)  
3x4 = 2235 (H) x 3070mm (W) x 960mm (D)  
For artwork dimensions, please refer to our separate download.

**Product Name:** Evolution Xpress  
**Type:** Pop-Up System



## User Instructions

- 1 Firstly, lift the unit up by holding the inner nodes of the pop-up frame. Now with a throwing action, open out the frame. Lock the frame in place by clicking the locking arms together.
- 2 Offer up each magbar to the pop-up frame node, this will snap into place. Fit all magbars to the frame till the structure is complete (curved pop-up shown).
- 3 Finally, unroll each panel and locate onto the magbars. Line up the panel edge with the centre of each magbar. To unassemble the system, reverse the instructions (as above), remembering to remove each panel from the bottom edge and roll the mag tape on the inner edge.